

Fuji-san and Life of communities in Hoku-san

**Yamakawa Yukinori
World Heritages Studies,
Graduate School of Comprehensive Human Sciences,
University of Tsukuba**

Area



<https://www.env.go.jp/park/fujihakone/intro/>

History

1936

Fuji-Hakone National Park

1955

Izu area was incorporated

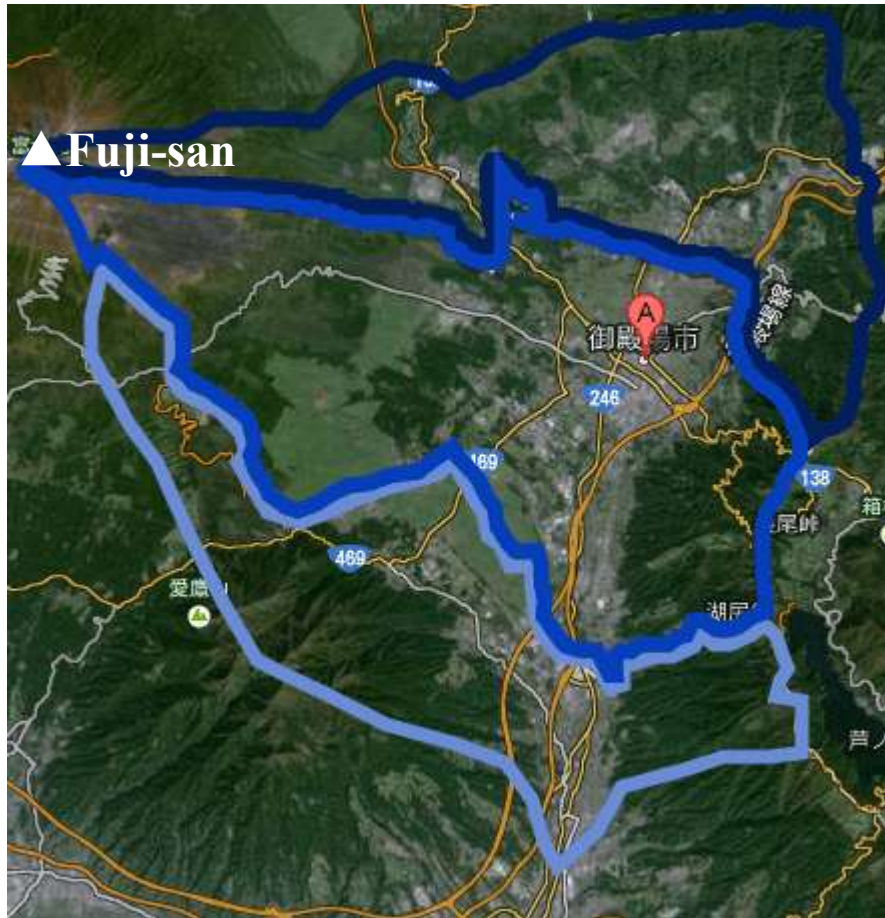
1966

**Izu-shichitou Quasi-National
Park was incorporated**

2013 World Heritage

**“SACRED PLACE AND SOURCE
OF ARTISTIC INSPIRATION”**

Fuji-san have another values!!



Hoku-sun area

Oyama Town
Gotemba City
Susono City

Gotemba City in 1965

Photo by Miyamoto Tsuneichi <http://www.towatown.jp/database/>

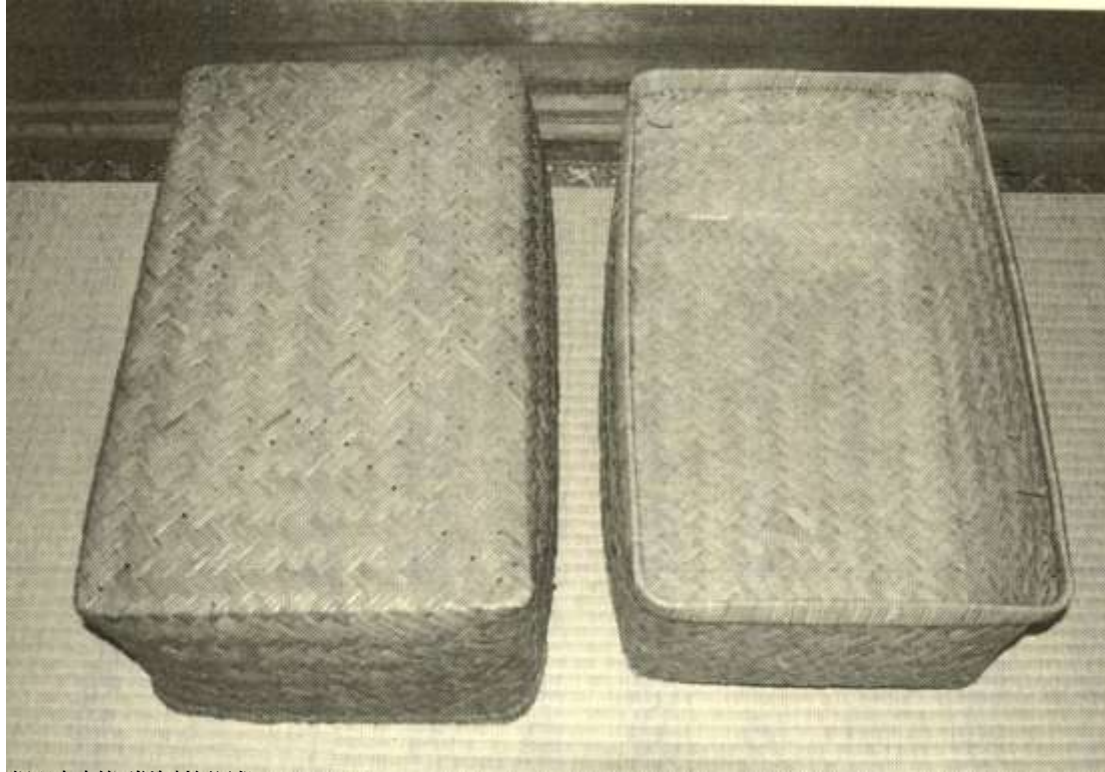


cut and get kaya in 1975



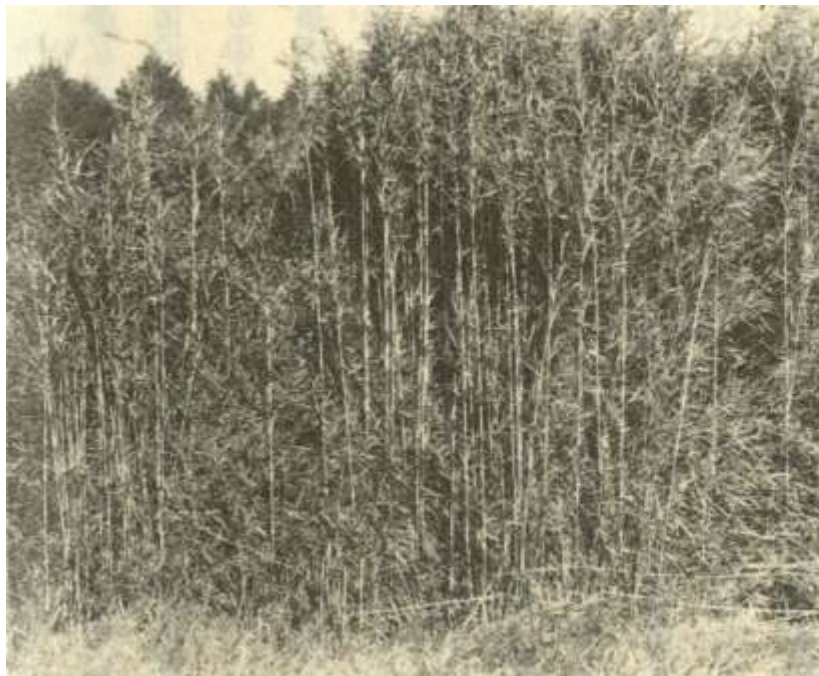
御殿場市史別巻考古・民俗編 1982

Take-Gouri



裾野市史第7巻資料編民俗 1997

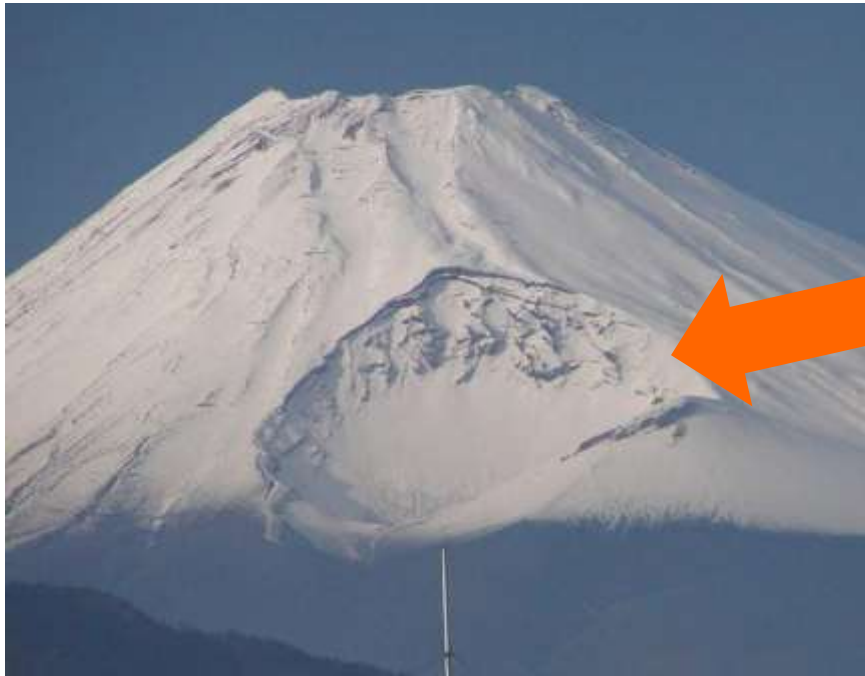
hakone-dake



suzu-dake



Fuji-san erupted in 1707



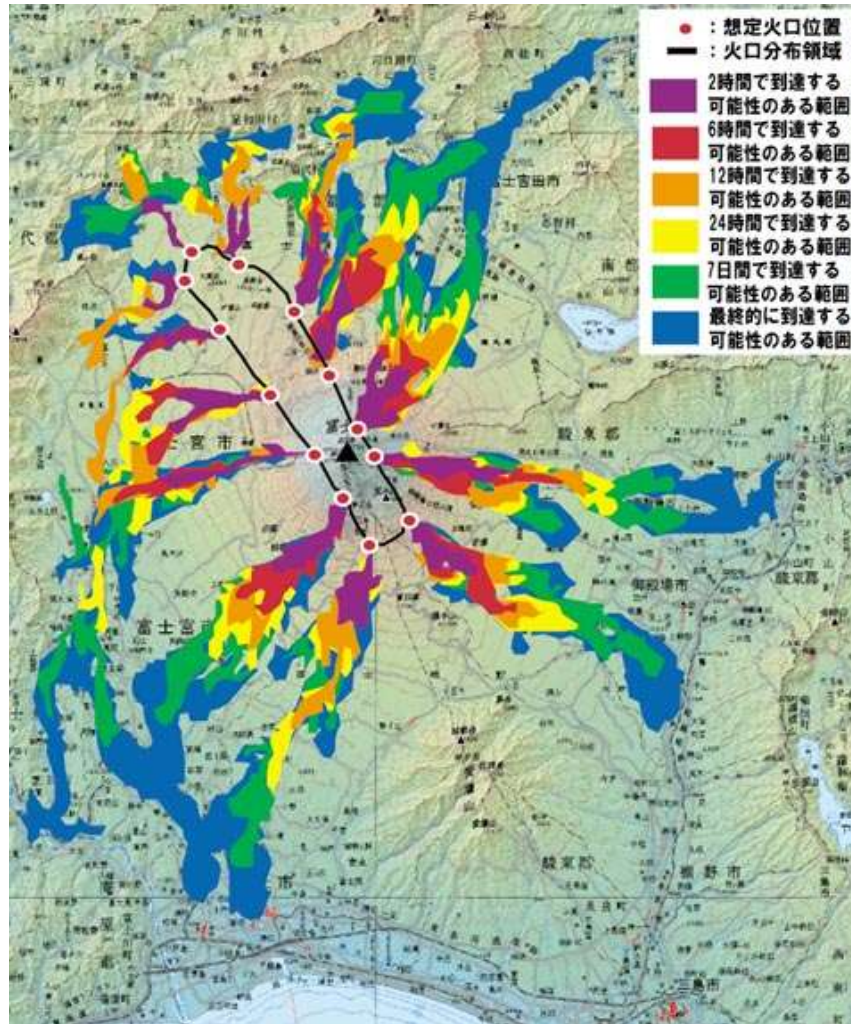
<http://blog.goo.ne.jp/ky2790/e/94e8db30989b79a3afb945e84d0102b2>

The Hoei crater



<http://hellonavi.jp/shimizu/shisetsu/101.html>

Hazard Map



By learning about the culture of the region,
**we can achieve sustainable development
around National Park.**



Thank you.